



Grade 80 Toebehoren / Grade 80 Accessories

28. Aanlashaken /
Weld hooks



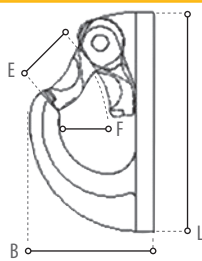
29. Inkort klauwen /
Clevis chain clutches



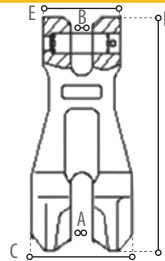
30. Wartel oogbouten /
Swivel lifting eyes



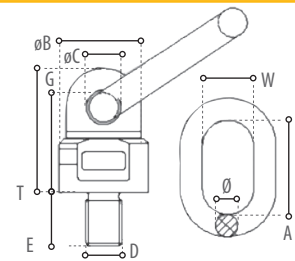
28



29



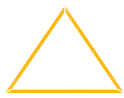
30



28							
Aanlashaken / Weld hooks							
Afmetingen / Dimensions							
Item no.	WLL (ton)	B	E	F	L	Weight (kg)	
YE.8.081.01	1.00	53.00	18.00	18.00	87.00	0.35	
YE.8.081.02	2.00	63.50	26.00	26.00	112.00	0.55	
YE.8.081.03	3.00	75.00	30.00	30.00	127.50	0.87	
YE.8.081.05	5.00	92.50	35.00	35.00	160.00	1.75	
YE.8.081.08	8.00	106.00	40.00	40.00	180.00	2.98	
YE.8.081.12	12.00	140.00	5.00	49.00	236.00	6.16	

29							
Inkort klauwen / Clevis chain clutches							
Afmetingen / Dimensions							
Item no.	WLL (ton)	A	B	C	E	L	Weight (kg)
YE.8.093.06	1.12	7.50	7.50	33.00	26.00	73.50	0.17
YE.8.093.08	2.00	9.50	9.50	45.00	36.00	101.00	0.41
YE.8.093.10	3.15	13.00	13.00	55.00	48.00	138.00	0.97
YE.8.093.13	5.30	18.00	16.00	75.00	59.00	177.00	2.01
YE.8.093.16	8.00	21.00	21.00	93.00	73.00	220.00	3.32
YE.8.093.20	12.50	22.00	22.00	99.00	78.00	258.00	6.20
YE.8.093.22	15.00	25.50	25.50	118.00	99.00	295.00	8.50

30												
Wartel oogbouten / Swivel lifting eyes												
Afmetingen / Dimensions												
Item no.	WLL (90°)	WLL (0°)	DxE	B	C	G	T	A	W	Q	Weight (kg)	
YE.8.032.08	0.30	0.60	m08x13	36.00	15.00	51.00	51.00	55.00	30.00	13.00	0.41	
YE.8.032.10	0.45	0.90	m10x18	36.00	15.00	51.00	41.00	55.00	30.00	13.00	0.43	
YE.8.032.12	0.50	1.00	m12x18	36.00	15.00	51.00	41.00	55.00	30.00	13.00	0.44	
YE.8.032.14	1.12	2.00	m14x20	36.00	15.00	51.00	41.00	55.00	30.00	14.00	0.45	
YE.8.032.16	1.12	2.00	m16x20	36.00	15.00	52.00	42.00	55.00	35.00	13.00	0.46	
YE.8.032.20	2.00	4.00	m20x30	49.50	19.00	68.00	56.00	70.00	40.00	16.00	0.96	
YE.8.032.24	3.15	6.30	m24x30	57.00	22.00	78.00	65.50	85.00	40.00	18.00	1.45	
YE.8.032.27	3.15	6.30	m27x35	57.00	22.00	78.00	65.50	85.00	40.00	18.00	1.51	
YE.8.032.30	5.30	10.60	m30x35	66.00	23.50	96.50	80.50	85.00	40.00	20.00	2.17	
YE.8.032.30-2	8.00	11.80	m30x35	80.00	28.00	112.00	92.00	115.00	50.00	22.00	3.57	
YE.8.032.36	8.00	11.80	m36x50	80.00	27.00	109.00	89.50	115.00	50.00	22.00	3.60	
YE.8.032.39	8.00	11.80	m39x90	80.00	27.00	109.00	89.50	115.00	50.00	22.00	4.10	
YE.8.032.42	10.00	15.00	m42x50	80.00	27.00	109.00	89.50	115.00	50.00	25.00	3.73	
YE.8.032.48	10.00	15.00	m48x50	80.00	27.00	109.00	89.50	115.00	50.00	25.00	4.02	



Grade 80 Accessoires / Grade 80 Zubehör

28. Crochets à souder /
Anschweißhaken



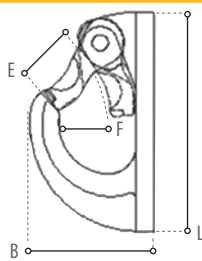
29. Griffes de raccourcissement /
Gabelkopf Kettenklauen



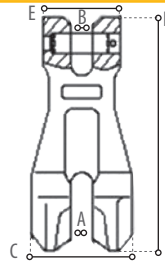
30. Boulons à oeil multi-
directionnels / Einschraubbare
Hebeösen mit Drehgelenk



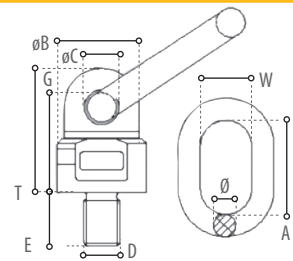
28



29



30



28 Crochets à souder / Anschweißhaken Dimensions / Abmessungen (mm)							
Item no.	WLL (ton)	B	E	F	L	Weight (kg)	
YE.8.081.01	1.00	53.00	18.00	18.00	87.00	0.35	
YE.8.081.02	2.00	63.50	26.00	26.00	112.00	0.55	
YE.8.081.03	3.00	75.00	30.00	30.00	127.50	0.87	
YE.8.081.05	5.00	92.50	35.00	35.00	160.00	1.75	
YE.8.081.08	8.00	106.00	40.00	40.00	180.00	2.98	
YE.8.081.12	12.00	140.00	5.00	49.00	236.00	6.16	

29 Griffes de raccourcissement / Gabelkopf Kettenklauen Dimensions / Abmessungen (mm)							
Item no.	WLL (ton)	A	B	C	E	L	Weight (kg)
YE.8.093.06	1.12	7.50	7.50	33.00	26.00	73.50	0.17
YE.8.093.08	2.00	9.50	9.50	45.00	36.00	101.00	0.41
YE.8.093.10	3.15	13.00	13.00	55.00	48.00	138.00	0.97
YE.8.093.13	5.30	18.00	16.00	75.00	59.00	177.00	2.01
YE.8.093.16	8.00	21.00	21.00	93.00	73.00	220.00	3.32
YE.8.093.20	12.50	22.00	22.00	99.00	78.00	258.00	6.20
YE.8.093.22	15.00	25.50	25.50	118.00	99.00	295.00	8.50

30 Boulons à oeil multidirectionnels / Einschraubbare Hebeösen mit Drehgelenk Dimensions / Abmessungen (mm)											
Item no.	WLL (90°)	WLL (0°)	DxE	B	C	G	T	A	W	Q	Weight (kg)
YE.8.032.08	0.30	0.60	m08x13	36.00	15.00	51.00	51.00	55.00	30.00	13.00	0.41
YE.8.032.10	0.45	0.90	m10x18	36.00	15.00	51.00	41.00	55.00	30.00	13.00	0.43
YE.8.032.12	0.50	1.00	m12x18	36.00	15.00	51.00	41.00	55.00	30.00	13.00	0.44
YE.8.032.14	1.12	2.00	m14x20	36.00	15.00	51.00	41.00	55.00	30.00	14.00	0.45
YE.8.032.16	1.12	2.00	m16x20	36.00	15.00	52.00	42.00	55.00	35.00	13.00	0.46
YE.8.032.20	2.00	4.00	m20x30	49.50	19.00	68.00	56.00	70.00	40.00	16.00	0.96
YE.8.032.24	3.15	6.30	m24x30	57.00	22.00	78.00	65.50	85.00	40.00	18.00	1.45
YE.8.032.27	3.15	6.30	m27x35	57.00	22.00	78.00	65.50	85.00	40.00	18.00	1.51
YE.8.032.30	5.30	10.60	m30x35	66.00	23.50	96.50	80.50	85.00	40.00	20.00	2.17
YE.8.032.30-2	8.00	11.80	m30x35	80.00	28.00	112.00	92.00	115.00	50.00	22.00	3.57
YE.8.032.36	8.00	11.80	m36x50	80.00	27.00	109.00	89.50	115.00	50.00	22.00	3.60
YE.8.032.39	8.00	11.80	m39x90	80.00	27.00	109.00	89.50	115.00	50.00	22.00	4.10
YE.8.032.42	10.00	15.00	m42x50	80.00	27.00	109.00	89.50	115.00	50.00	25.00	3.73
YE.8.032.48	10.00	15.00	m48x50	80.00	27.00	109.00	89.50	115.00	50.00	25.00	4.02