



Grade 80 Toebehoren / Grade 80 Accessories

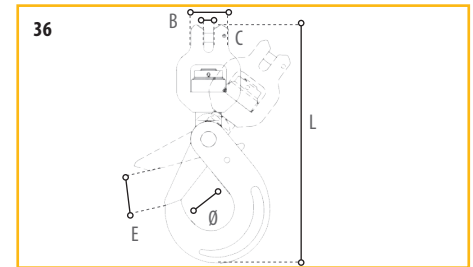
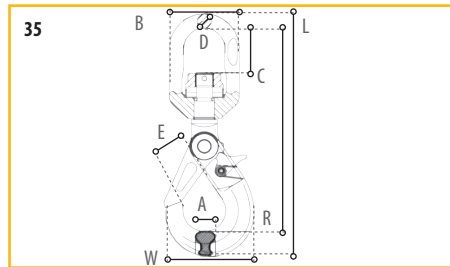
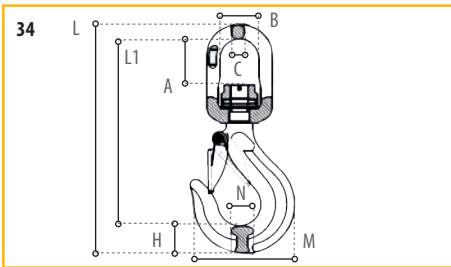
34. Wartelooghaak met klep en lager / Swivel hooks with latch and bearing
(Draaibaar met last / Swivel with load)



35. Veiligheids wartel ooghaak met lager / Self-locking swivel hooks with bearing
(Draaibaar met last / Swivel with load)



36. Veiligheids wartel gaffelhaak met lager / Self-locking swivel clevis hooks with bearing
(Draaibaar met last / Swivel with load)



34 Wartelooghaak met klep en lager / Swivel hooks with latch and bearing Afmetingen / Dimensions											
Item no.	WLL (ton)	A	B	C	E	H	M	N	L1	L	Weight (kg)
YE.8.088.06	1.12	30.00	32.50	11.00	24.00	19.30	69.00	16.00	136.00	166.00	0.65
YE.8.088.08	2.00	42.00	36.00	13.00	28.50	23.00	88.00	20.00	170.00	208.00	0.95
YE.8.088.10	3.15	50.00	42.00	15.50	31.00	29.50	105.00	23.00	204.80	251.70	1.71
YE.8.088.13	5.30	58.00	50.00	17.00	43.70	38.00	135.00	32.00	242.00	303.60	2.97
YE.8.088.16	8.00	63.50	61.00	21.50	45.00	45.40	161.00	37.50	291.80	360.80	5.30
YE.8.088.20	12.50	86.00	74.00	25.00	56.00	50.00	191.70	49.00	356.00	434.50	9.50

35 Veiligheids wartel ooghaak met lager / Self-locking swivel hooks with bearing Afmetingen / Dimensions											
Item no.	WLL (ton)	A	B	C	D	E	L	PL	W	Weight (kg)	
YE.8.089.06	1.12	15.00	32.50	35.00	11.50	28.00	196.00	164.50	69.70	0.71	
YE.8.089.08	2.00	20.00	36.00	42.00	13.00	36.50	241.00	204.00	88.00	1.12	
YE.8.089.10	3.15	26.00	42.00	50.00	15.50	45.00	284.00	240.50	107.70	2.00	
YE.8.089.13	5.30	32.50	50.00	60.00	17.00	53.60	342.50	284.50	137.00	4.00	
YE.8.089.16	8.00	38.00	61.00	65.00	21.50	61.00	422.00	350.50	165.50	7.30	

36 Veiligheids wartel gaffelhaak met lager / Self-locking swivel clevis hooks with bearing Afmetingen / Dimensions							
Item no.	WLL (ton)	B	C	E	L	Ø	Weight (kg)
YE.8.090.06	1.12	8.0	32.00	28.00	180.00	34.00	0.73
YE.8.090.08	2.00	9.5	37.00	34.00	227.50	46.00	1.30



Grade 80 Accessoires / Grade 80 Zubehör

34. Crochets à oeil à émerillon avec linguet et roulement / Drehkopf-Ösenhaken mit Schnapp-Verriegelung und Kugellager

(Pivotant avec charge / Drehen mit Ladung)



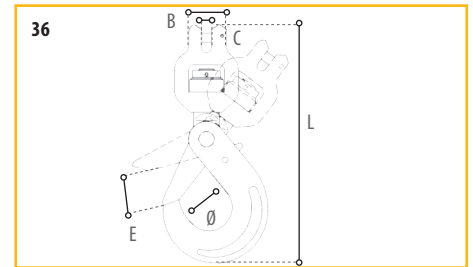
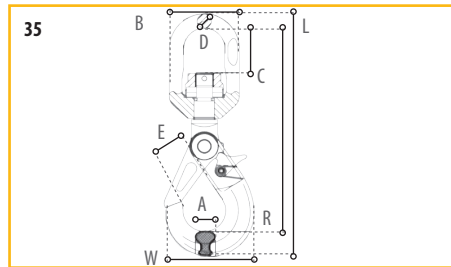
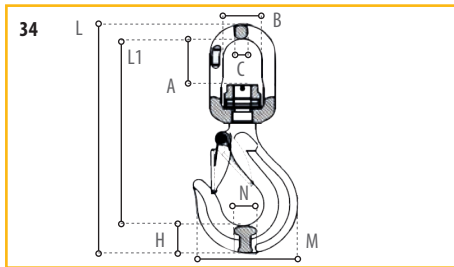
35. Crochets à oeil à émerillon avec verrouillage et roulement / Selbstsichernde Drehkopfhaken mit Kugellager

(Pivotant avec charge / Drehen mit Ladung)



36. Crochets à chape à émerillon avec verrouillage et roulement / Selbstsichernde Drehkopfhaken mit Gabelkopf und Kugellager

(Pivotant avec charge / Drehen mit Ladung)



34 Crochets à oeil à émerillon avec linguet et roulement / Drehkopf-Ösenhaken mit Schnapp-Verriegelung und Kugellager Dimensions / Abmessungen (mm)											
Item no.	WLL (ton)	A	B	C	E	H	M	N	L1	L	Weight (kg)
YE.8.088.06	1.12	30.00	32.50	11.00	24.00	19.30	69.00	16.00	136.00	166.00	0.65
YE.8.088.08	2.00	42.00	36.00	13.00	28.50	23.00	88.00	20.00	170.00	208.00	0.95
YE.8.088.10	3.15	50.00	42.00	15.50	31.00	29.50	105.00	23.00	204.80	251.70	1.71
YE.8.088.13	5.30	58.00	50.00	17.00	43.70	38.00	135.00	32.00	242.00	303.60	2.97
YE.8.088.16	8.00	63.50	61.00	21.50	45.00	45.40	161.00	37.50	291.80	360.80	5.30
YE.8.088.20	12.50	86.00	74.00	25.00	56.00	50.00	191.70	49.00	356.00	434.50	9.50

35 Crochets à oeil à émerillon avec verrouillage et roulement / Selbstsichernde Drehkopfhaken mit Kugellager Dimensions / Abmessungen (mm)										
Item no.	WLL (ton)	A	B	C	D	E	L	PL	W	Weight (kg)
YE.8.089.06	1.12	15.00	32.50	35.00	11.50	28.00	196.00	164.50	69.70	0.71
YE.8.089.08	2.00	20.00	36.00	42.00	13.00	36.50	241.00	204.00	88.00	1.12
YE.8.089.10	3.15	26.00	42.00	50.00	15.50	45.00	284.00	240.50	107.70	2.00
YE.8.089.13	5.30	32.50	50.00	60.00	17.00	53.60	342.50	284.50	137.00	4.00
YE.8.089.16	8.00	38.00	61.00	65.00	21.50	61.00	422.00	350.50	165.50	7.30

36 Crochets à chape à émerillon avec verrouillage et roulement / Selbstsichernde Drehkopfhaken mit Gabelkopf und Kugellager Dimensions / Abmessungen (mm)							
Item no.	WLL (ton)	B	C	E	L	Ø	Weight (kg)
YE.8.090.06	1.12	8.0	32.00	28.00	180.00	34.00	0.73
YE.8.090.08	2.00	9.5	37.00	34.00	227.50	46.00	1.30